

ATLANTIC - AK305 WT

YATARLI PORTATİF KESİM MAKİNESİ / PORTABLE TILTED MITER SAW MACHINE (Ø 305 mm / 12")

TR

PVC, alüminyum ve ahşap profillerin düz ve dereceli kesme işlemleri için tasarlanmış yatarlı portatif kesim makinesidir.

- Güçlü indüksiyonlu motor
- Yüksek kesme kapasitesi (y 85 mm x 123 mm)
- Her iki yönde (0°-15°-22,5°-30°-45°) sabit açılarda kesim
- -45° ve +45° ara derecelerde sabitleme ile kesim yapabilme imkânı
- Sol tarafa 45° derecede yatarlı kesim imkânı
- **Kurmalı gizli yay sistemi** ile hassas ve güvenli kesim
- Ergonomik **soft grip** tutamak ile konforlu kullanım

STANDART EKİPMANLAR:

- Dayama Grubu
- Yatay Mengene Grubu (1 Takım)
- 17 mm Anahtar ve 6-8 Allen Takımı

OPSİYONEL EKİPMANLAR:

- Ø 305 mm Testere
- Yatay Mengene Grubu
- Konveyör - KAI
- Sehpa - BERING

ENG

Portable tilted cutting machine designed for straight and angled cutting of PVC, aluminum, and wooden profiles.

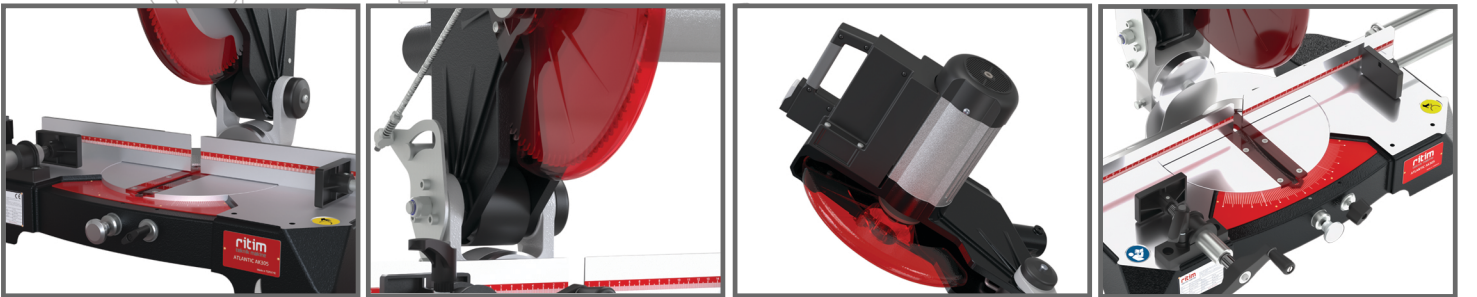
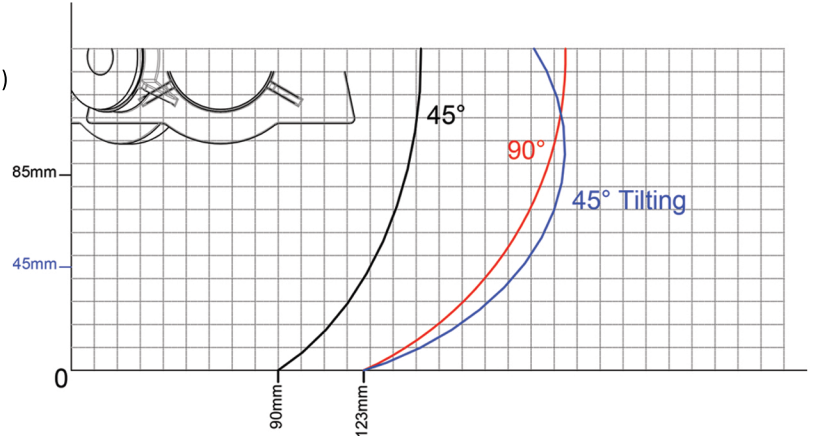
- Powerful induction motor
- High cutting capacity (h 85 mm x 123 mm)
- Cutting at fixed angles at both directions (0°-15°-22,5°-30°-45°)
- Ability to cut by fixing at intervals of -45° to +45°
- Ability of tilted cutting at 45° to the left side
- Precise and safe cutting with **mainspring system**
- Comfortable use with ergonomic **soft grip** handle

STANDARD EQUIPMENT:

- Profile Support Set
- Horizontal Clamp Set (1 Set)
- 17 mm Wrench and 6-8 Allen Set

OPTIONAL EQUIPMENT:

- Ø 305 mm Saw Blade
- Horizontal Clamp Set
- Conveyor - KAI
- Stand with Shelf - BERING



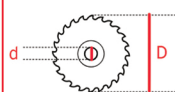
İNDÜKSİYONLU
MOTOR
INDUCTION MOTOR
0,8 kW (800 Watt)
1 HP



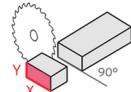
VOLTAJ
VOLTAGE
220-230 V - 1~
5 A - 50 Hz



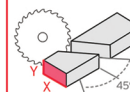
YÜKSÜZ HIZ
NO LOAD SPEED
3000 RPM



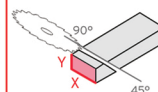
D Ø 305 mm
d 30-32 mm



X: 123
Y: 85 mm



X: 90
Y: 85 mm



X: 123
Y: 45 mm



22 kg



550 x 610 x 527 mm
24 kg